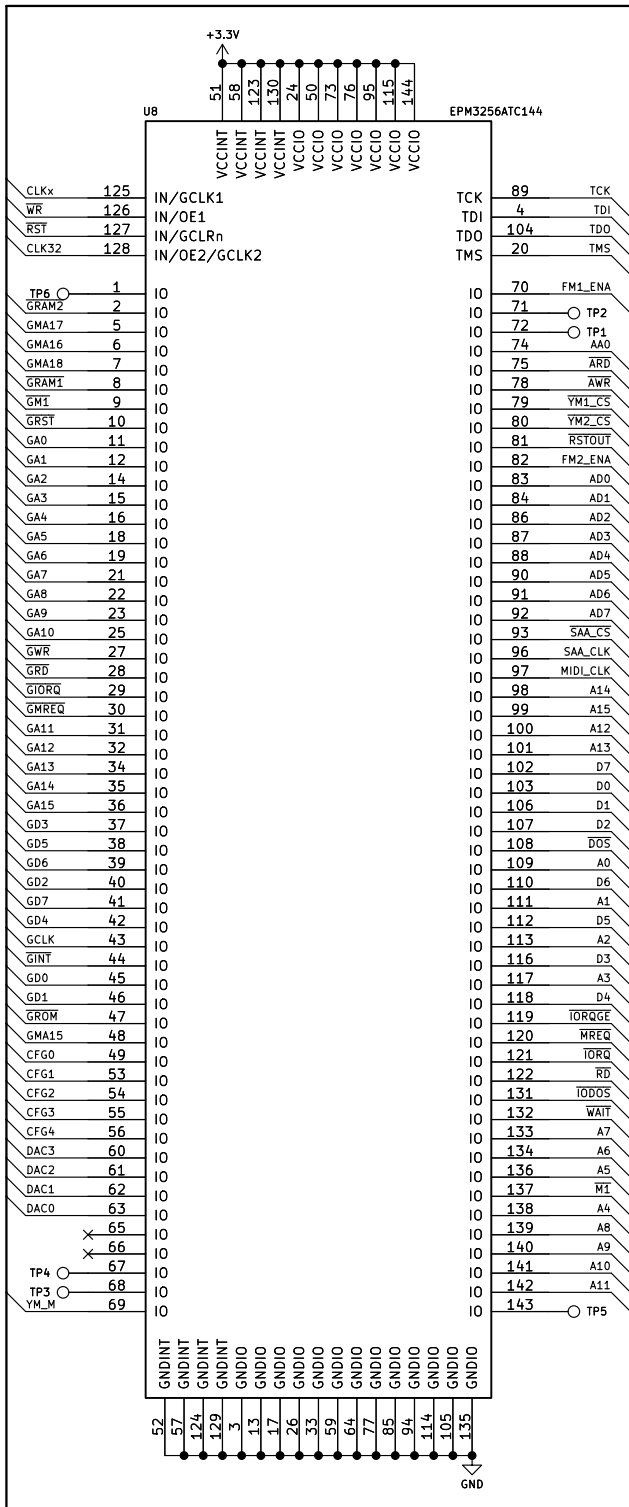
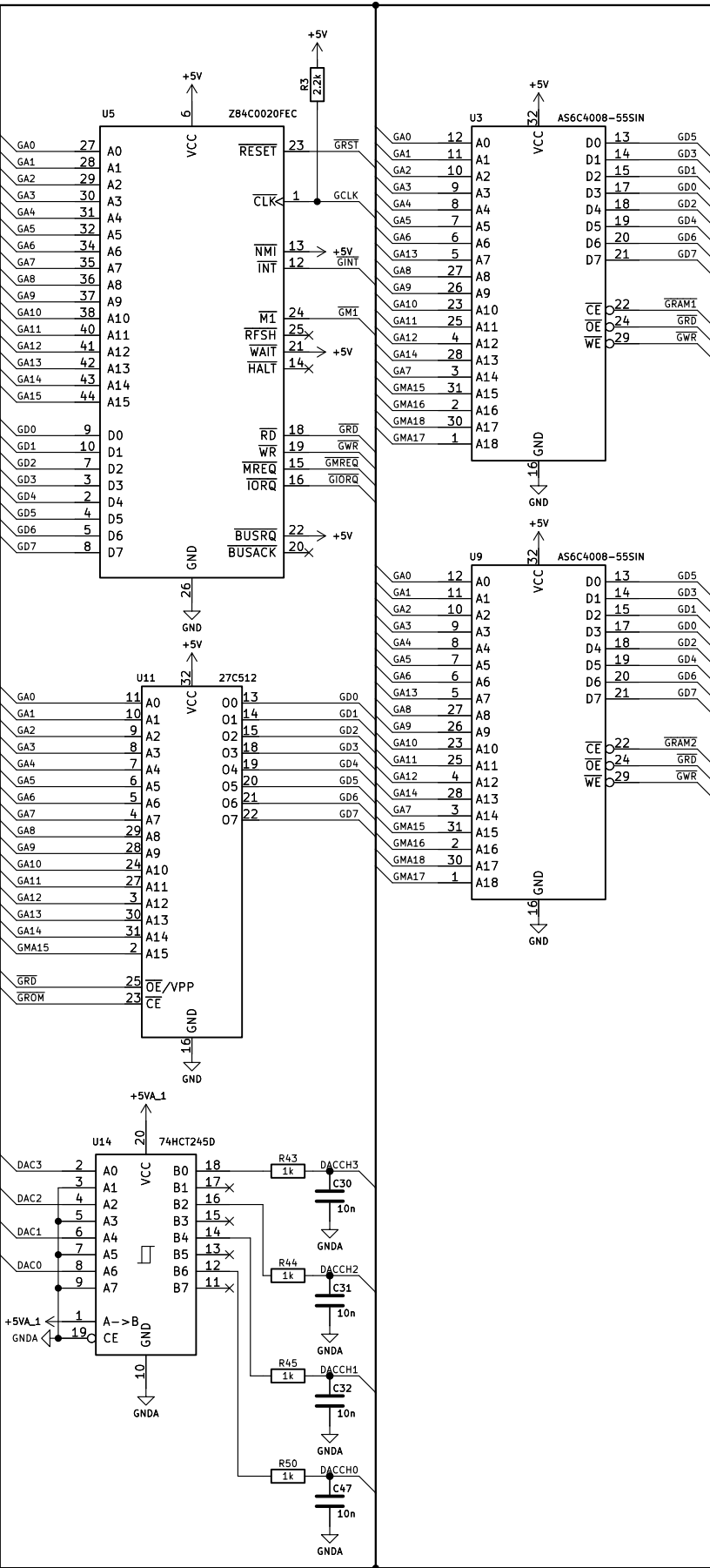


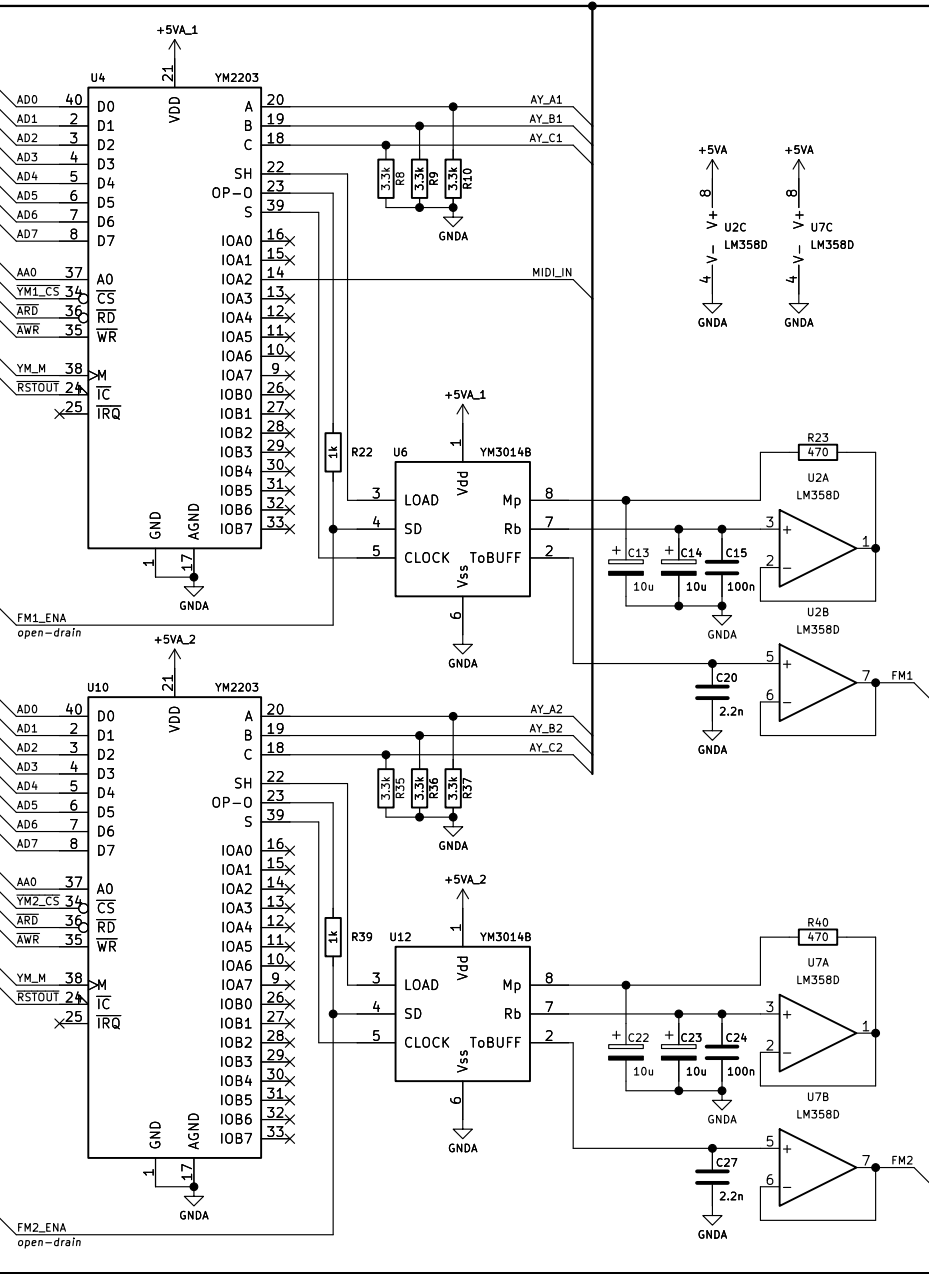
CPLD



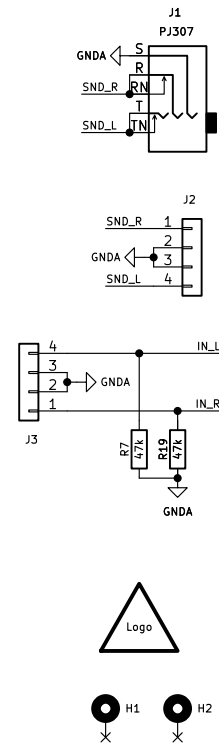
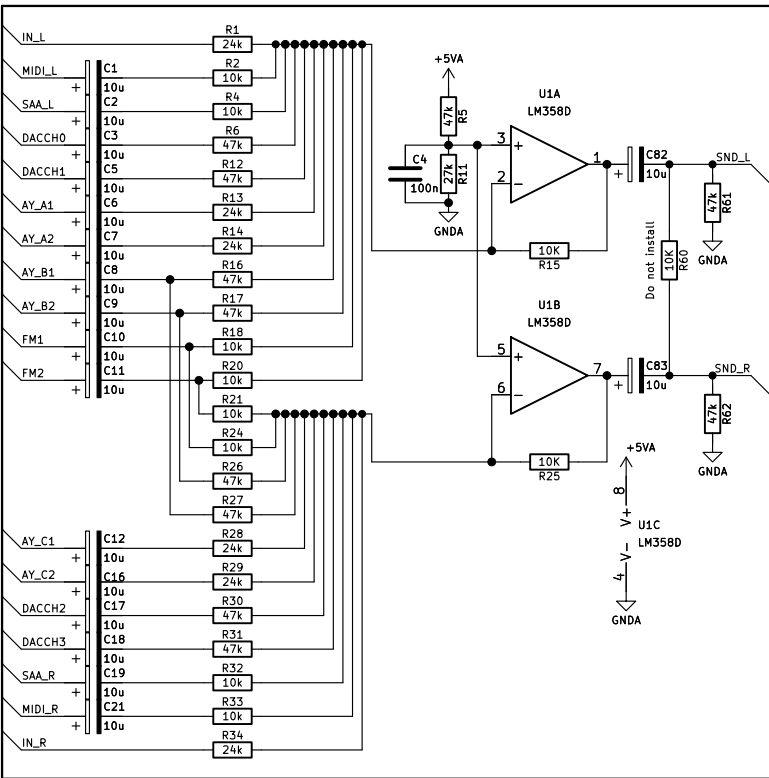
GENERAL SOUND



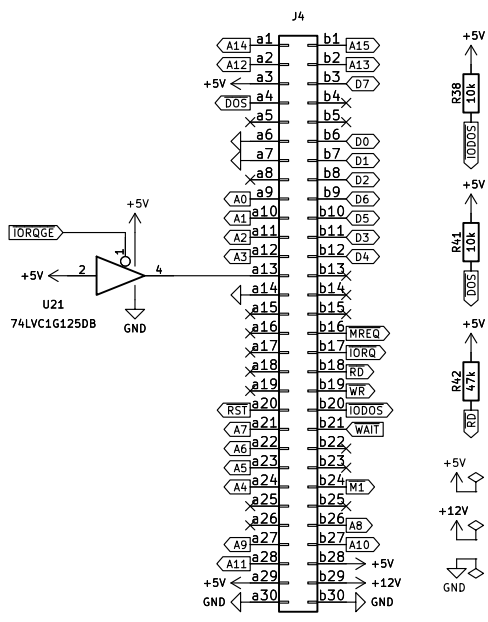
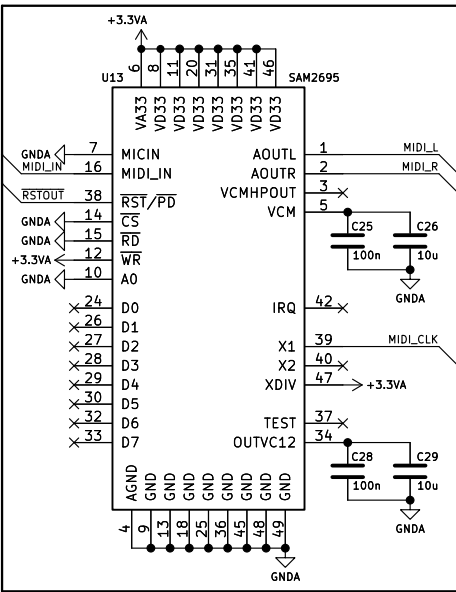
TURBO SOUND FM



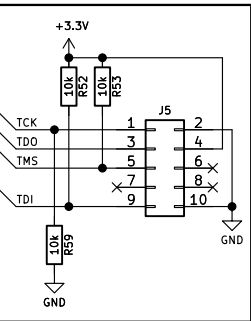
MIXER



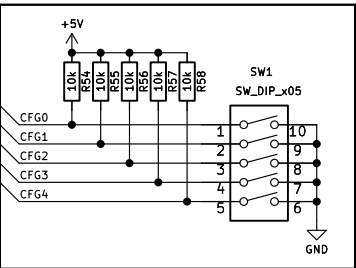
MIDI



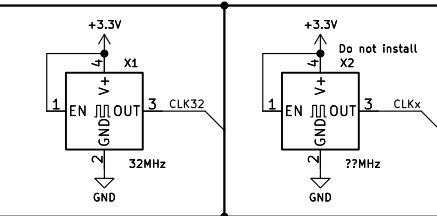
JTAG



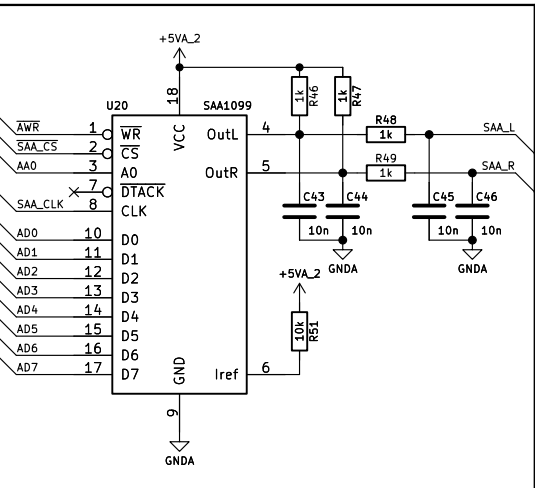
CONFIGURATION



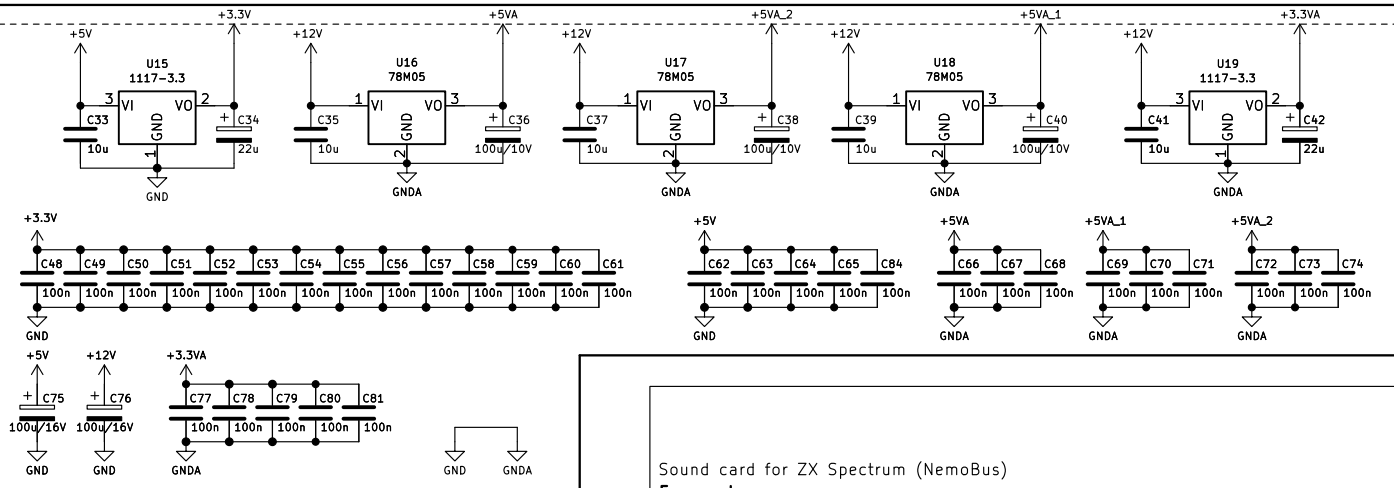
CLOCK



SAA1099



POWER



Sound card for ZX Spectrum (NemoBus)

Eugene Lozovoy

Sheet: /

File: zx-multisound.kicad_sch

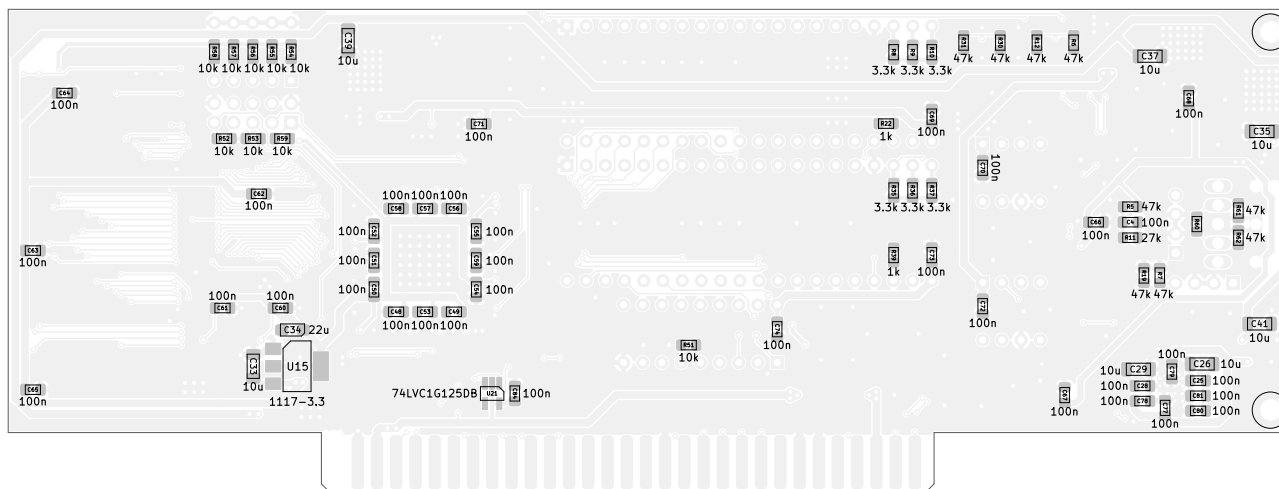
Title: ZX-MULTISOUND

Size: User Date: 2022-11-12

KiCad E.D.A. kicad (6.0.9)

Rev: A1

Id: 1/1



Eugene Lozovoy

Sheet: Assembly

File: zx-multisound.kicad_pcb

Title: ZX-MULTISOUND

Size: A4

Date: 2022-11-12

Rev: A1

KiCad E.D.A. kicad (6.0.9)

Id: 1/1

| Designator | Package | Value | Quantity |
|---------------------------------------------------------------------------------------------------------------------------------------------------------------------------------------------|-------------------------------------------------------------|---------------------|----------|
| C1, C2, C3, C5, C6, C7, C8, C9, C10, C11, C12, C13, C14, C16, C17, C18, C19, C21, C22, C23, C82, C83 | CP_Elec_4x5.4 | 10u | 22 |
| C4, C15, C24, C25, C28, C48, C49, C50, C51, C52, C53, C54, C55, C56, C57, C58, C59, C60, C61, C62, C63, C64, C65, C66, C67, C68, C69, C70, C71, C72, C73, C74, C77, C78, C79, C80, C81, C84 | C_0805_2012Metric_Pad1.18x1.45mm_HandSolder | 100n | 38 |
| C20, C27 | C_0805_2012Metric_Pad1.18x1.45mm_HandSolder | 2.2n | 2 |
| C26, C29, C33, C35, C37, C39, C41 | C_1206_3216Metric_Pad1.33x1.80mm_HandSolder | 10u | 7 |
| C30, C31, C32, C43, C44, C45, C46, C47 | C_0805_2012Metric_Pad1.18x1.45mm_HandSolder | 10n | 8 |
| C34, C42 | CP_EIA-3216-18_Kemet-A_Pad1.58x1.35mm_HandSolder | 22u | 2 |
| C36, C38, C40 | CP_EIA-6032-28_Kemet-C_Pad2.25x2.35mm_HandSolder | 100u/10V | 3 |
| C75, C76 | CP_Elec_6.3x7.7 | 100u/16V | 2 |
| J1 | SWITCHCRAFT_35RAPC4BHN2 | PJ307 | 1 |
| J2, J3 | PinHeader_1x04_P2.54mm_Vertical | Conn_01x04 | 2 |
| J5 | PinHeader_2x05_P2.54mm_Vertical | Conn_02x05_Odd_Even | 1 |
| R1, R13, R14, R28, R29, R34 | R_0805_2012Metric_Pad1.20x1.40mm_HandSolder | 24k | 6 |
| R2, R4, R18, R20, R21, R24, R32, R33, R38, R41, R51, R52, R53, R54, R55, R56, R57, R58, R59 | R_0805_2012Metric_Pad1.20x1.40mm_HandSolder | 10k | 19 |
| R3 | R_0805_2012Metric_Pad1.20x1.40mm_HandSolder | 2.2k | 1 |
| R5, R6, R7, R12, R16, R17, R19, R26, R27, R30, R31, R42, R61, R62 | R_0805_2012Metric_Pad1.20x1.40mm_HandSolder | 47k | 14 |
| R8, R9, R10, R35, R36, R37 | R_0805_2012Metric_Pad1.20x1.40mm_HandSolder | 3.3k | 6 |
| R11 | R_0805_2012Metric_Pad1.20x1.40mm_HandSolder | 27k | 1 |
| R15, R25 | R_0805_2012Metric_Pad1.20x1.40mm_HandSolder | 10K | 2 |
| R22, R39, R43, R44, R45, R46, R47, R48, R49, R50 | R_0805_2012Metric_Pad1.20x1.40mm_HandSolder | 1k | 10 |
| R23, R40 | R_0805_2012Metric_Pad1.20x1.40mm_HandSolder | 470 | 2 |
| SW1 | SW_DIP_SPSTx05_Slide_6.7x14.26mm_W7.62mm_P2.54mm_LowProfile | SW_DIP_x05 | 1 |
| U1, U2, U7 | SOIC-8_3.9x4.9mm_P1.27mm | LM358D | 3 |
| U3, U9 | SSOP-32_11.305x20.495mm_P1.27mm | AS6C4008-55SIN | 2 |
| U4, U10 | DIP-40_W15.24mm_Socket | YM2203 | 2 |
| U5 | TQFP-44_14x14mm_P0.8mm | Z84C0020FEC | 1 |
| U6, U12 | DIP-8_W7.62mm_Socket | YM3014B | 2 |
| U8 | TQFP-144_20x20mm_P0.5mm | EPM3256ATC144 | 1 |
| U11 | PLCC-32_11.4x14.0mm_P1.27mm-longpads | 27C512 | 1 |
| U13 | QFN-48-1EP_6x6mm_P0.4mm_EP4.2x4.2mm | SAM2695 | 1 |
| U14 | SOIC-20W_7.5x12.8mm_P1.27mm | 74HCT245D | 1 |
| U15, U19 | SOT-223-3_TabPin2 | 1117-3.3 | 2 |
| U16, U17, U18 | TO-252-2 | 78M05 | 3 |
| U20 | DIP-18_W7.62mm_Socket | SAA1099 | 1 |
| U21 | SOT-23-5_HandSoldering | 74LVC1G125DB | 1 |
| X1 | my:Oscillator_SMD_7050_7.0x5.0mm | 32MHz | 1 |